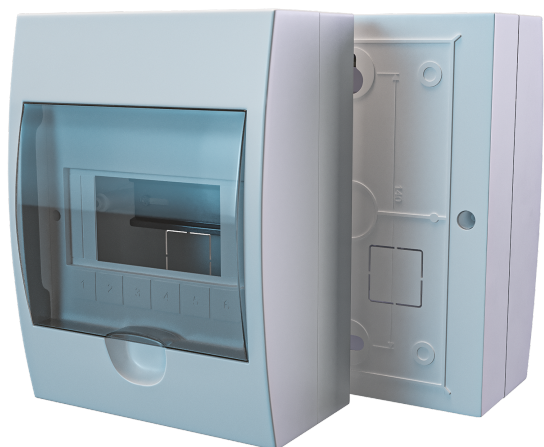


ZEPHYR DISTRIBUTION BOARD IP44 - SURFACE



Features

- Each switchboard comes equipped with twin-screw earth, neutral and RCD bars for comprehensive electrical distribution.
- Label sheets are included, facilitating organized and efficient circuit identification.
- Blank Pole Fillers included
- A 1 Pole Busbar is provided as part of the switchboard's components.
- Opaque amber lid for easy viewing
- Dimensions of the switchboard are W 184mm x H 200mm x L 95mm, optimizing space and installation options.
- These switchboards are designed to meet a variety of electrical needs while maintaining a compact form factor.

Product Information

Product Code	Poles	Rows	Width (A)	Height (B)	Depth (C)
ZDBS4	4	1	90	200	94
ZDBS6	6	1	145	200	94
ZDBS8	8	1	185	200	94
ZDBS12	12	1	255	200	94
ZDBS18	18	1	365	220	94
ZDBS24	24	2 x 12	270	325	94
ZDBS36	36	3 x 12	270	460	94

Specifications

Product Code	ZDBS8
Unit Of Measure	Each
Brand	ZEPHYR
Colour	White with Amber Lid
IP Rating	IP44
Dimensions	W 184mm x H 200mm x L 95mm

